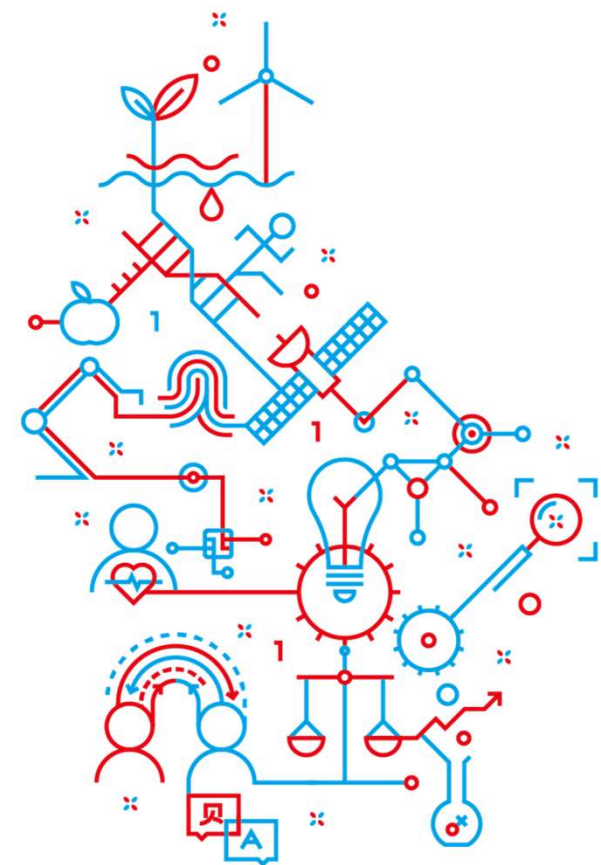


Introduction to the Luxembourg National Data Service (LNDS)

Plateforme Nationale d'Échange de Données (PNED G.I.E)

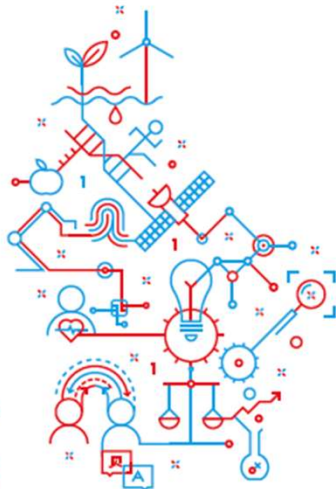


BACKGROUND FOR THE CREATION OF LNDS

Data reuse is a key element for innovation in Luxembourg

NATIONAL RESEARCH AND INNOVATION STRATEGY FOR LUXEMBOURG

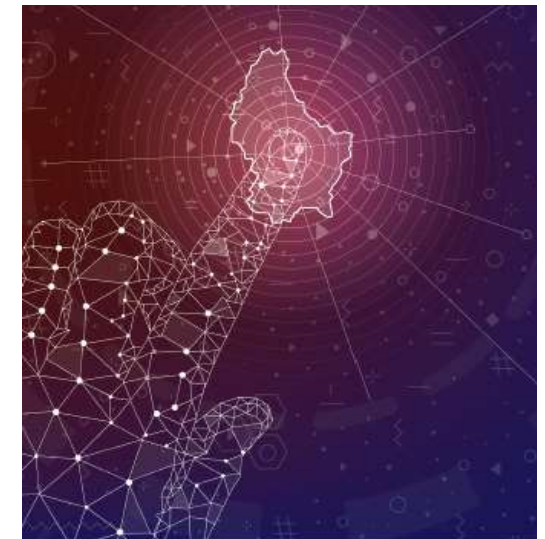
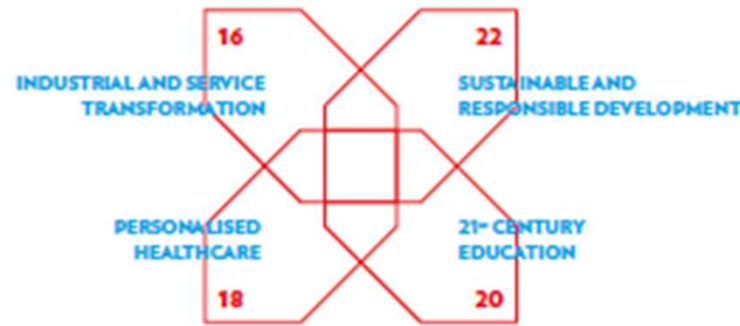
FOR LUXEMBOURG



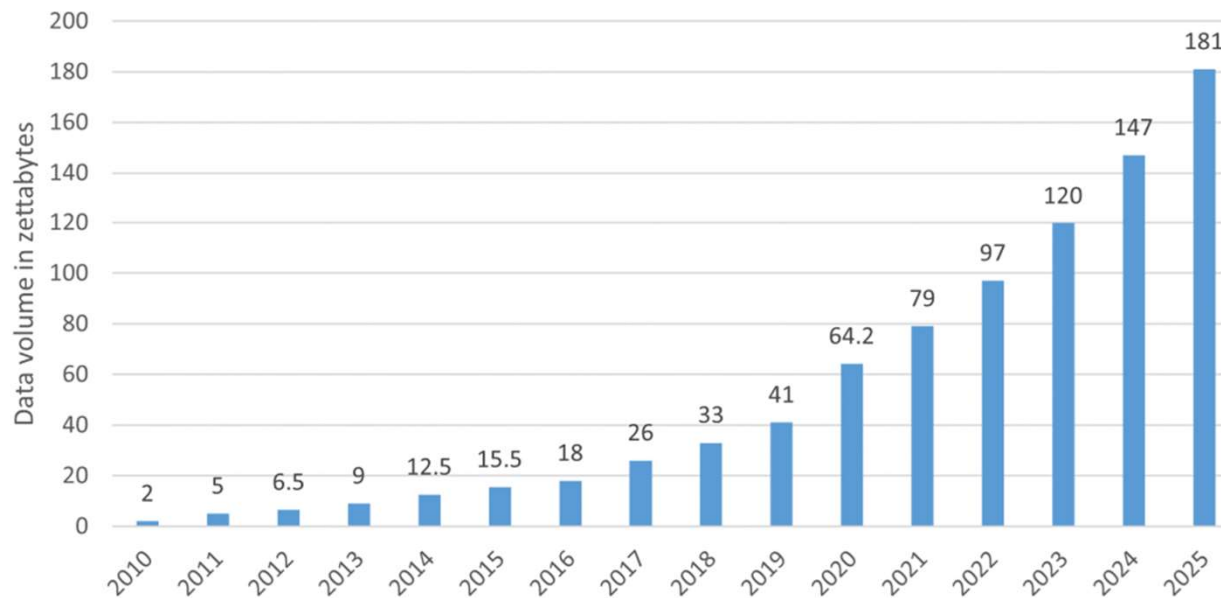
MISSION LUXEMBOURG 2030

WHERE TO INVEST

Four interdisciplinary research priority areas to prepare Luxembourg for the future



Volume of data created and replicated worldwide (source: IDC)



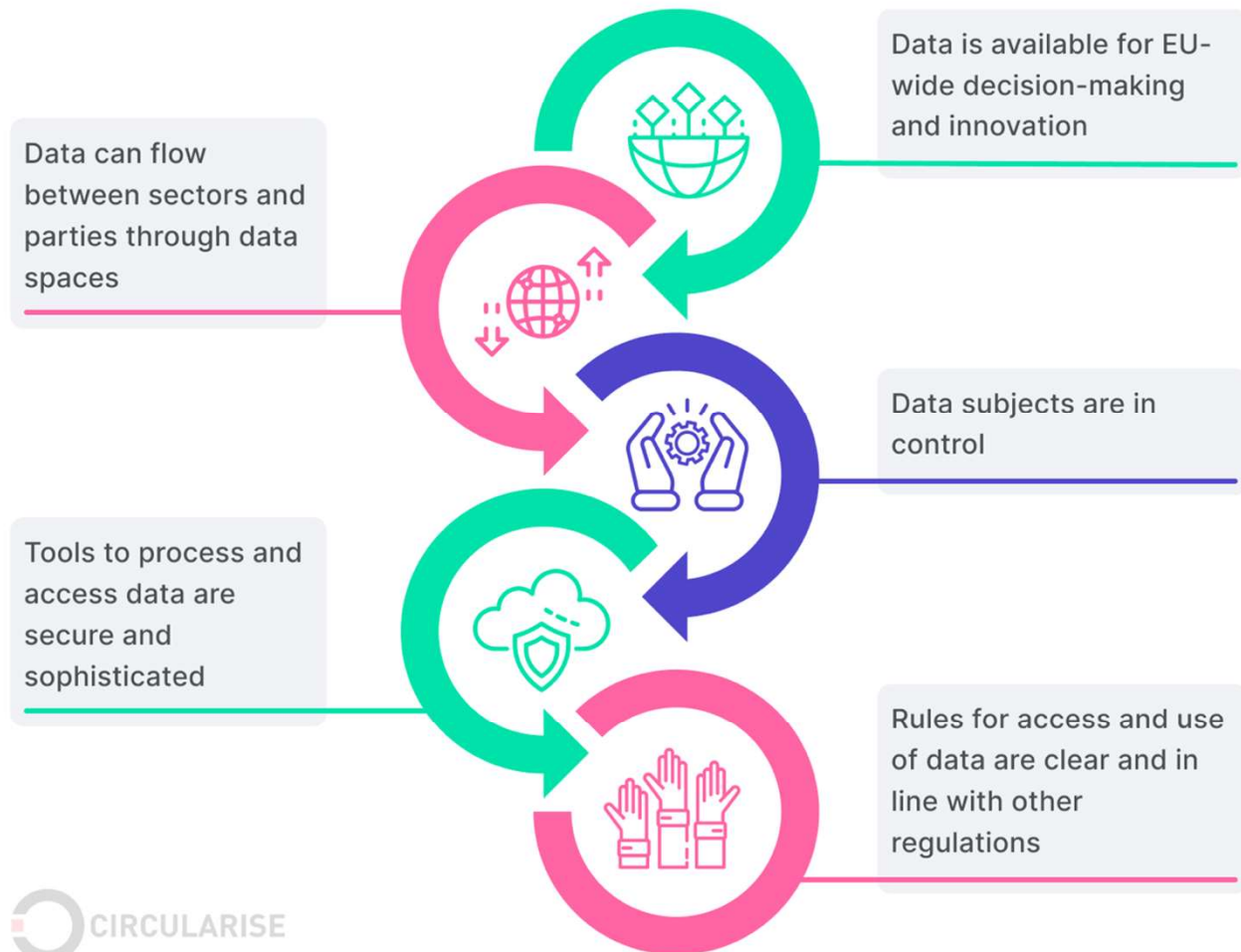
THE DATA-DRIVEN INNOVATION STRATEGY FOR THE DEVELOPMENT OF A TRUSTED AND SUSTAINABLE ECONOMY IN LUXEMBOURG



BACKGROUND FOR THE CREATION OF LNDS

Luxembourg aims to prepare for European data spaces

European strategy for data



— BACKGROUND FOR THE CREATION OF LNDS

Positioned to be competent body of Luxembourg as per EU DGA

- EU Data Governance Act (DGA)
- Member states to establish “competent body(ies)” to support secondary use of data from the public sectors
- Competent bodies assist the public sector bodies which grant or refuse access for the re-use by
 - providing technical support by making available a **secure processing environment for providing access** for the re-use of data;
 - providing guidance and technical support on how to **best structure and store data** to make that data easily accessible
 - providing technical support for **pseudonymisation** and ensuring data processing in a manner that effectively **preserves the privacy, confidentiality, integrity and accessibility** of the information
 - assisting the public sector bodies, where relevant, to provide support to re-users in requesting **consent for re-use** from data subjects
 - providing public sector bodies with assistance in assessing the **adequacy of contractual commitments** made by a re-user



WHAT WE ARE

Luxembourg National Data Service (LNDS)

- A national organisation providing services for value creation from public sector data.
- Focusing on enabling sharing and re-use of data for public and private data partners.
- Offering technology and data services, know-how, capabilities, platform, and infrastructure.
- Developing and supporting solutions for responsible secondary use.

Note: The Luxembourg National Data Service is a brand of PNED G.I.E, an economic interest group established on 28 July 2022 by the Luxembourg government and public institutes.



— VISION AND MISSION

Key component of the Luxembourg data innovation strategy

- **Support research and innovation** through a high-quality service offering.
- Contribute to accelerating the development of Luxembourg **towards a data economy.**
- Enable participation of both public research and private actors in the **complete value-creating chain of data.**
- **Enhance data** in the context of common innovation among all actors.
- Become a partner of choice for joint **development of the next generation of data products.**

We build trusted paths from data to value.



WHAT WE ARE

Luxembourg National Data Service (LNDS)

(Plateforme Nationale d'Échange des Données PNED G.I.E)

- **Legal form:**
 - Groupement d'Intérêt Économique (GIE)
- **Institutions represented in the board:**
 - Ministry of Higher Education & Research
 - Ministry of Digitalisation
 - Ministry of the Economy
 - Ministry of Finance
 - Ministry of Social Security
 - Ministry of State
 - Luxembourg Institute of Health (LIH)
 - Luxembourg Institute of Socio-Economic Research (LISER)



— MAIN ACTIVITIES

LNDS will design and build a service portfolio:

- Enabling services to create **data spaces** within and across different sectors
 - Services to achieve **data discovery** and **data availability**
 - Services related to the **secure processing** of data
 - **Assisting** public sector bodies with **managing data access requests**
- A **training platform** around data reuse
- **Technology platform / IT infrastructure** required to the implementation of the services
- **Co-develop** these services with our data partners
- Deliver **value from data** along the way



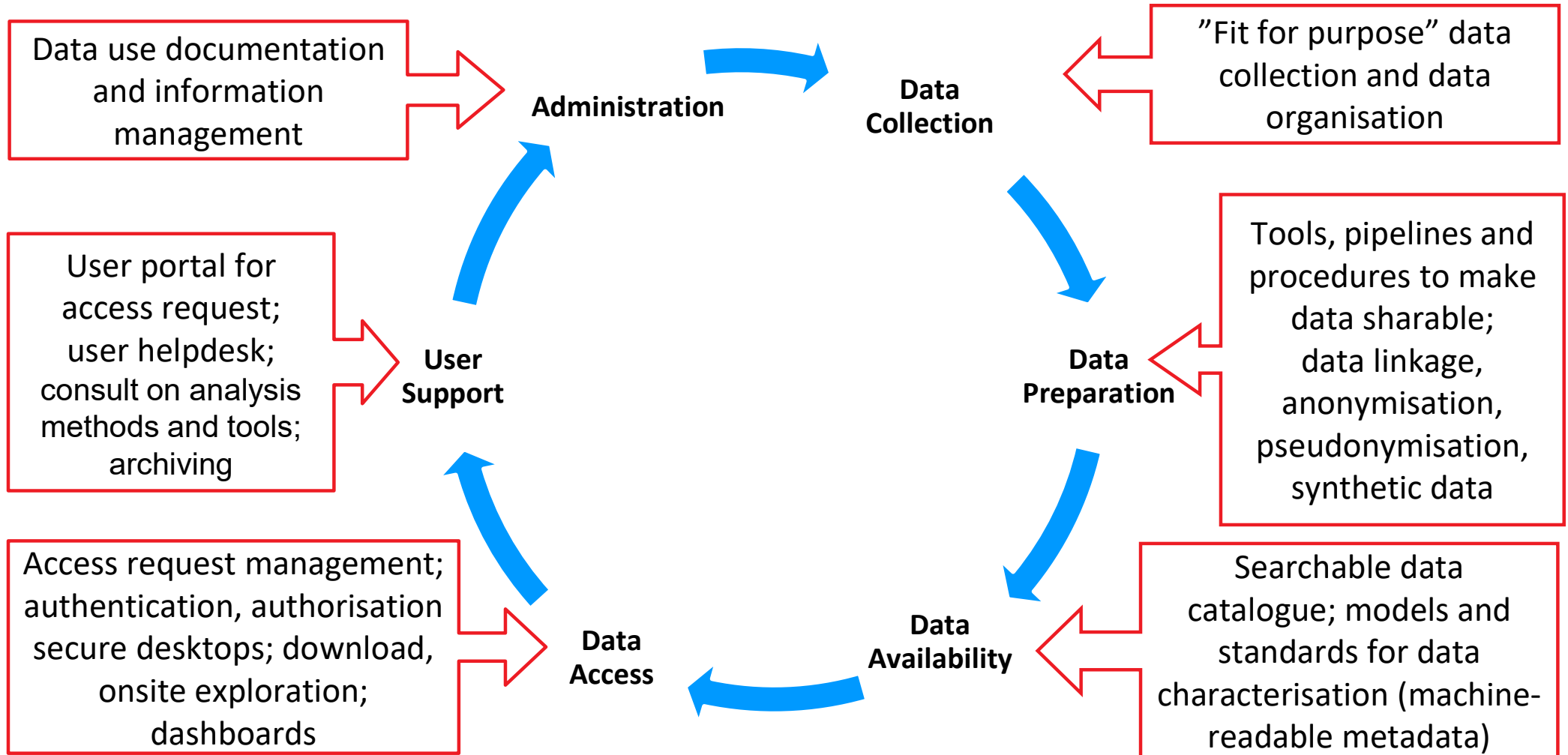
— LNDS AS AN AGILE ORGANISATION

- Work in small teams centred around Service Innovation, Technology, Data and ELSI.
- Follow fast development cycles.
- Prioritise data partner requirements, tailor our services into partner-centric solutions.
- Not only adopt but also develop technology for our operations.
- Onboard external resource partners to our agile train when building solutions.



LNDS - A SERVICE PLATFORM FOR DATA RE-USE IN LUXEMBOURG

Services to support the public sector in its data sharing mission



— LNDS – ADDITIONAL SERVICES

A partner for responsible innovation

- Support on **best practices** in research and data management
- Consultancy on **data analysis methods and tools**
- Recommendations for **compliance**
- **Community management**
- **Advice** to the legislator



— LNDS – SUPPORTING DATA SPACES IN THE HEALTHCARE SECTOR

Engagement and activities on the national and EU level

- Potential Role as a **health data access body** taking over some functionalities (data management related; no permit authority)
- **Consultancy** role in the definition of a **European Digital Infrastructure Consortium (EDIC) for genomic medicine**
 - European 1+ Million Genome governmental initiative to make genomic and health data available cross-border in Europe
- **Infrastructure provider** within the future 1+MG EDIC, potentially EHDS, Gaia-X clearing house, e.a.
- **Partner in data-driven health innovation projects:**
 - CLINNOVA
 - Potential genomic medicine initiative

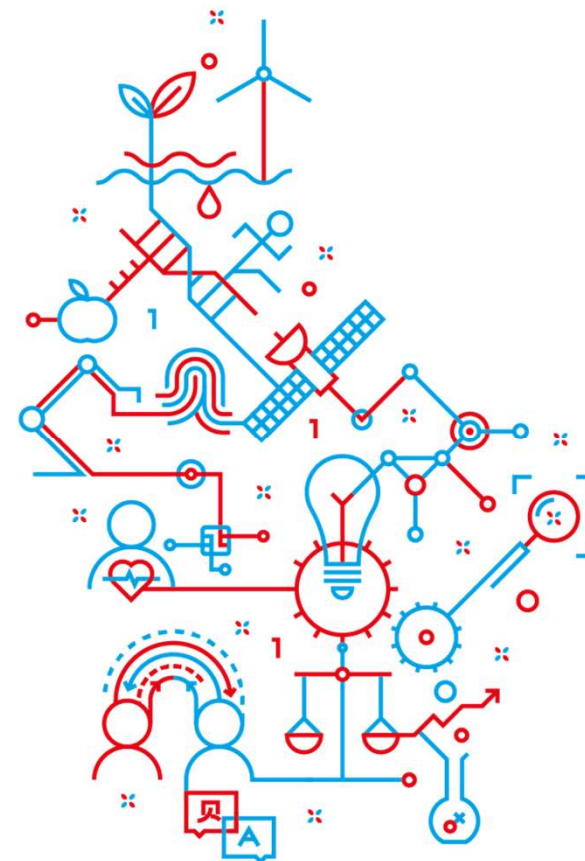


THANK YOU FOR YOUR ATTENTION!

LUXEMBOURG NATIONAL DATA SERVICE

LU  **EMBOURG**

LET'S MAKE IT HAPPEN



LE GOUVERNEMENT
DU GRAND-DUCHÉ DE LUXEMBOURG
Ministère de l'Enseignement supérieur
et de la Recherche

THE MISSING LINK

Connecting the ecosystem in Luxembourg's Digital Strategy

